

METAL REINFORCED LAMINATES

STANDARD GRADES

GHH



GHJ

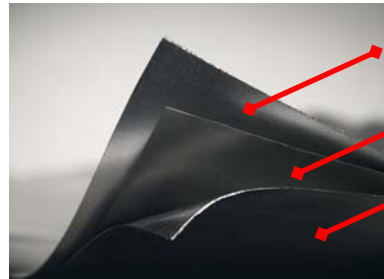


TG-251



GRAFOIL Grade GHH

GRAFOIL Grade GHH is a laminate made with GRAFOIL Grade GTC flexible graphite chemically bonded to both faces of a flat, low-carbon steel core.



GRAFOIL Grade GTC

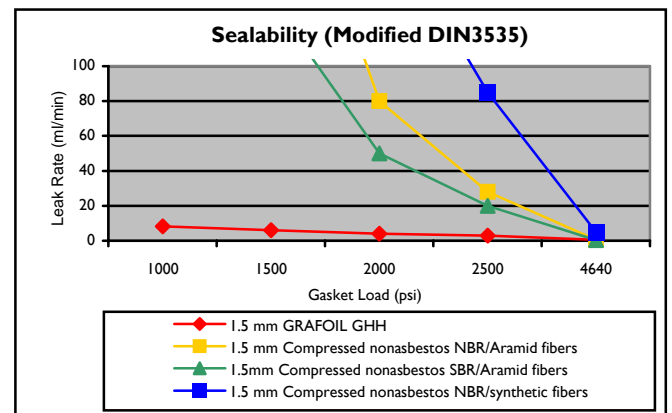
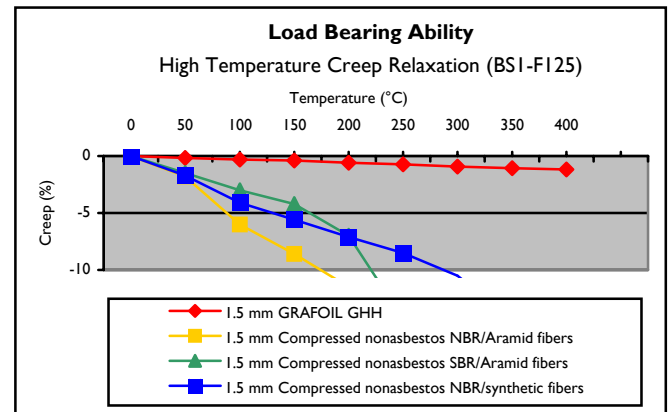
Low Carbon Steel

GRAFOIL Grade GTC

APPLICATIONS

- Exhaust sealing
- Gasoline/diesel head gaskets
- EGR valve sealing
- Turbo charger gaskets

While maintaining an effective seal, GRAFOIL material exhibits virtually no creep relaxation. As a result, the need for periodic bolt tightening is greatly reduced.



Grade GHH Typical¹ Properties

Laminate Construction:

1. GRAFOIL Grade GTC (per Technical Bulletin 002)
micro-thin, phenolic-based adhesive
2. 0.004" thick Low-Carbon Steel Grade 1008 or 1010
micro-thin, phenolic-based adhesive
3. GRAFOIL Grade GTC (per Technical Bulletin 002)

| CHARACTERISTIC | TYPICAL PROPERTY |
|--|---|
| Thickness of Laminate | 0.024" (0.61 mm) Standard 0.034" (0.86 mm) Standard 0.064" (1.63 mm) Standard <i>Non-standard thicknesses may be available upon request.</i> |
| Width | 24" (610 mm) Standard <i>Non-standard widths may be available upon request.</i> |
| Length | 24" (610 mm) Standard 100' (30.5 m) Standard <i>Non-standard lengths may be available upon request.</i> |
| Bulk Density (Graphite) | 70 lb/ft ³ (1.12 g/cc) Standard <i>Non-standard densities may be available upon request.</i> |
| Compressibility at 5000 psi (35 MPa) load | 36% Typical |
| Recovery after 5000 psi (35 MPa) load | 26% Typical |
| Creep Relaxation at 6391 psi (44.1 MPa) load | <3% Typical for 70 lb/ft ³ |
| Air Aging, 5 hours at 540°C Weight Loss | 2% Typical |
| Compressibility | 41% Typical |
| Recovery | 17% Typical |
| Certification | Certify to Grade |

¹ Properties listed are typical and cannot be used as accept/reject specifications. Specifications are listed under Technical Bulletin 145.